

# CHLOROPHYLL

## CHLOROPHYLL E140

**Origin:** It is sourced from plants such as Grass, Spinach & Alfalfa.

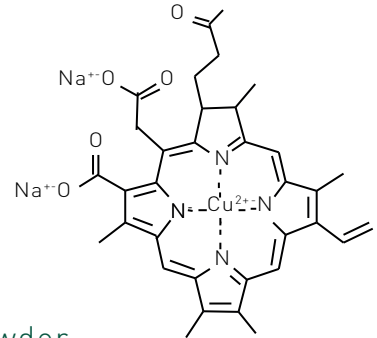
**Profile:** Yellow-green pigment.

**Formats:** Available as water soluble liquid, water soluble powder, and oil soluble liquid.

**Stability:** Has limited heat and acid stability so must be used carefully processed to avoid damaging the pigment.

### Applications:

Dairy / Ice Cream  
Snacks  
Confectionery  
Bakery  
Beverage  
Seasonings



## E141 (I) COPPER CHLOROPHYLL

Copper Chlorophyll is a semi-synthetic derivative of Chlorophyll which has been reacted with Copper to create an oil-soluble pigment with **ENHANCED STABILITY** and a **bold, green colour**. Typically an oil soluble liquid, Copper Chlorophyll can also be made water soluble through the use of permitted emulsifiers. It is also commonly blended with yellow colours

## E141 (II) SODIUM COPPER CHLOROPHYLLIN

Sodium Copper Chlorophyllin is a semi-synthetic derivative of Chlorophyll which has been reacted with Sodium salts to create a **dark green** water-soluble pigment with **EXCELLENT HEAT AND LIGHT STABILITY**. It is widely used in the confectionery industry for its rich and intense green colour. Typically providing more of a blue/green shade, Copper Chlorophyllin can be blended with yellow colours to make a range of green shades from Pistachio or Kiwi to Aqua Marine and Mints.

### Technical Support

Talk to our team about the options available and our recommendations which would be given according to the application. Accelerated stability testing can also be undertaken in our laboratories to assist our partners.